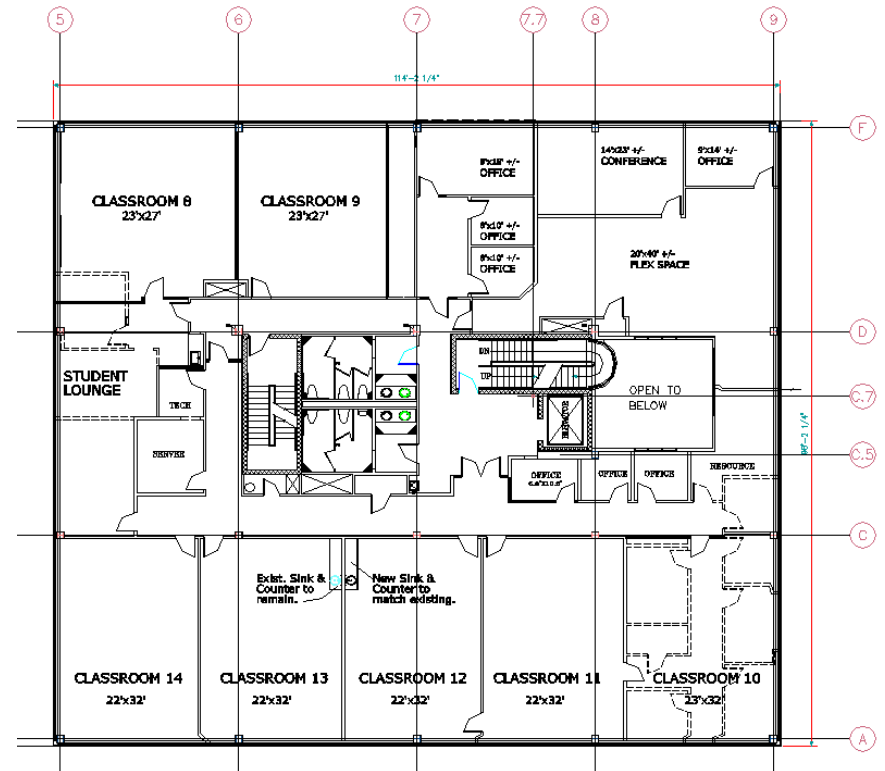
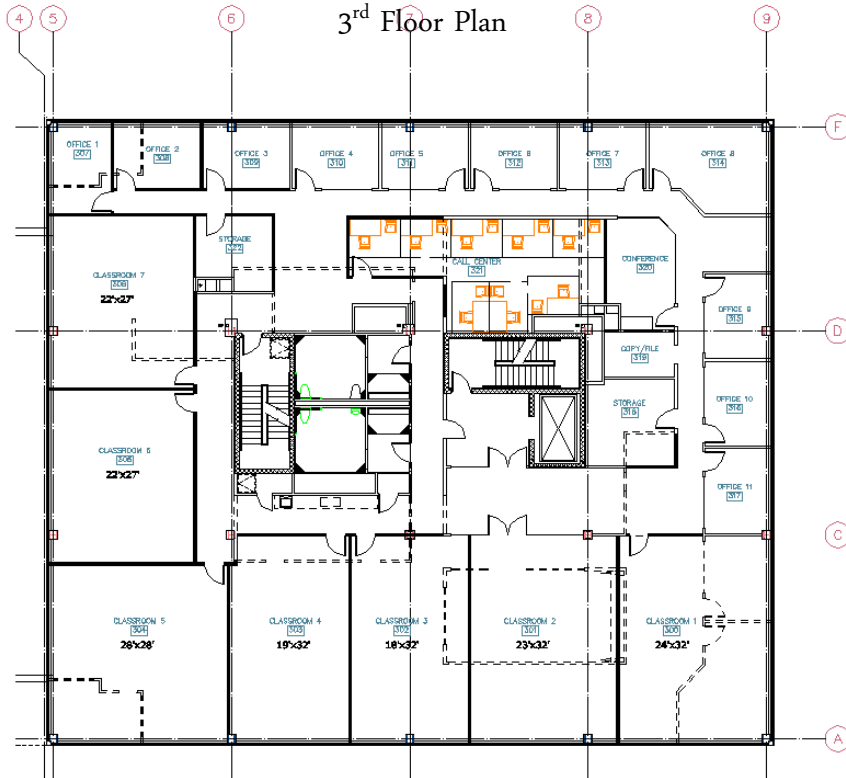


Messina Company - 781 848 5000



Former ACI school!
22,500 SF
2nd and 3rd Floors
Competitive Rate

2nd Floor Plan





Former Advanced Career Institute
22,500 SF +/- Available! Will Subdivide

Messina Company - 781 848 5000

Located at the entrance to

Granite Plaza:

- Great frontage
- Easy Access
- High traffic
- Commuter corridor
- 5:1 Parking Ratio
- Across from Braintree High School.

